



> The Complete  
Basement Entrance



**Experience.  
Innovation.**

800.854.9724  
[WWW.BILCO.COM](http://WWW.BILCO.COM)

The PermEntry Basement Entrance adds sales appeal and value to any home by providing convenient, direct access to basement areas. The product consists of a precast concrete stairwell and BILCO basement door that is delivered and installed on your foundation by a BILCO dealer.



## PermEntry Benefits

- Adds building code compliant emergency egress.
- Provides direct access to mechanical equipment, reducing traffic and damage to the main level of the home.
- Allows large furniture, bulky appliances and patio furniture to be easily moved into basement areas.
- Creates additional living space and saleable square footage.
- The PermEntry system works well on any new or existing concrete foundation.

## The complete installation of the precast stairwell and door is typically done in under two hours.

- Holes for the special high-strength bolts are drilled through foundation.
- Facing surfaces are coated with self-sealing butyl resin strip sealant for a watertight seal. The PermEntry precast stairwell is then lowered into position onto the foundation footing.
- Precast stairwell is secured prior to backfill through foundation wall using built-in steel anchors. On a block or precast foundation, a permanent steel support is installed on a concrete slab underneath the precast unit.
- The BILCO door is anchored to the precast stairwell and caulked. The area is then backfilled and landscaped.

## Advantages and Features

### Concrete Stairwell

- Precast in one piece.
- Thoroughly vibrated for maximum density.
- Manufactured to rigid specifications for controlled high quality.
- A performance-proven product.
- Can be installed on poured concrete and concrete block foundations.
- Thousands installed since 1960.
- Satisfies IRC 2015 Building Code requirements for emergency egress in finished basements.

### BILCO Basement Door

- Rugged heavy gauge steel construction (Also available in no maintenance polyethylene construction).
- Neat and trim appearance.
- Lift assistance for ease of operation.
- Flanged, weather resistant construction.
- Slide bolt locking mechanism (Optional keyed lock kit available).



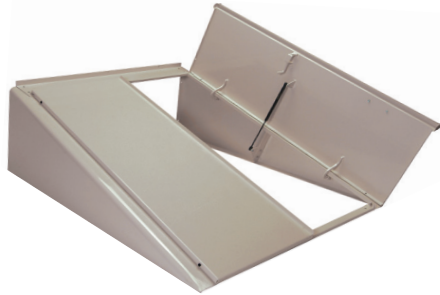


Log on to [www.BILCO.com](http://www.BILCO.com) to find a sales representative near you.

## BILCO Basement Door Models



Classic Series - Primer Finish



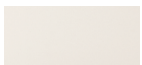
Classic Series - Powder Coat Finish



Ultra Series - Polyethylene

### Powder Coat Finish Colors

BILCO Classic Series steel basement doors are now offered with a factory-applied polyester powder coat finish. The polyester resin provides a durable, weather-resistant coating. Cured at higher temperatures than most wet coatings, the result is a tougher and chip-resistant coating, providing both a decorative and protective finish.



White



Gray



Sandstone



Brick



Green



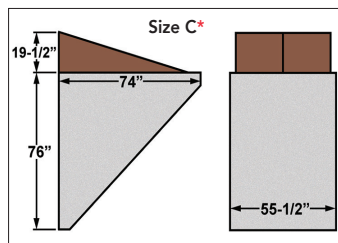
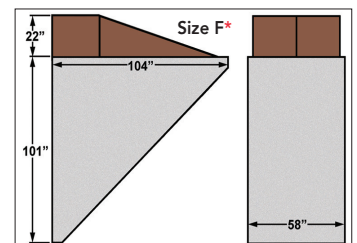
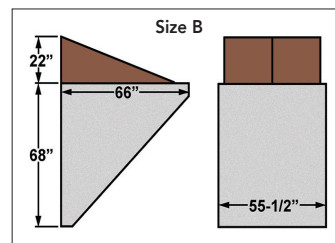
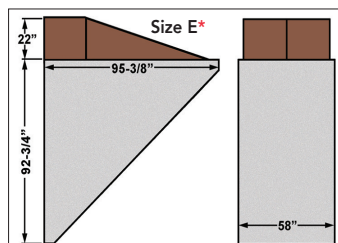
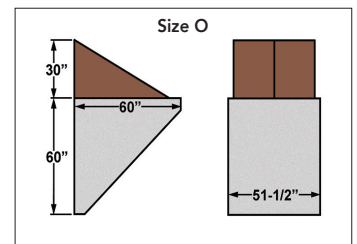
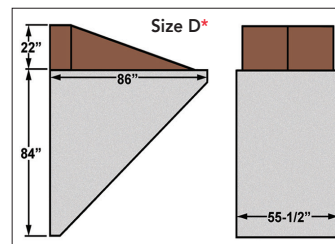
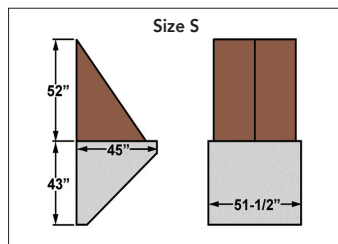
Black



Powder coated basement doors can be ordered with a keyed lock kit. This option allows you to conveniently lock and unlock the basement door from the outside.

### Pre-Installation Requirements:

1. Provide truck access to within 10' of the center of the PermEntry unit.
2. Foundation footing and opening should be LEVEL, PLUMB and SQUARE.
3. Width of opening in foundation wall should be 40" maximum for all sizes.
4. Ensure proper soil drainage at base of unit. A footing drain to daylight is recommended.
5. When foundation is backfilled, leave minimum work area for PermEntry installation as shown.
6. Basement floor or equivalent slab should be poured in the concrete wall.
7. Hold foundation tar coating back minimum 12" each side of opening.



PermEntry Size	Footing to Grade
S	35" – 41"
O	52" – 58"
B	59" – 66"
C*	67" – 74"
D*	75" – 82"
E*	83" – 91"
F*	92" – 99"

\* Optional Ultra Series Door available for sizes C, D, E and F only.

### How to Measure:

1. Determine the measurement from the finished grade to the foundation footing.
2. Refer to table and details above to select the proper size. Top of casting should be a minimum of 2" above finished grade.
3. Double check your pre-installation requirements and check site to determine that there is proper truck access to and from the PermEntry installation site.

# Experience. Innovation.

- *Commercial Access Products* • *Fire Protection Products* • *Safety Products*
  - *Basement Access Products* • *Basement Egress Products*
- 

The BILCO Company  
Phone: 800.854.9724  
Fax: 740.455.3400  
E-mail: residential@BILCO.com

WWW.BILCO.COM



an AmesburyTruth™ company

Licensed Dealer